

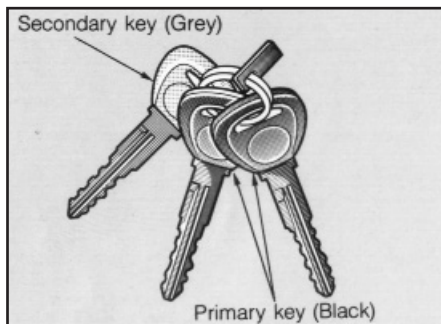
# 2

## Knowing Your Xedos Vehicle

	KEYS	2 - 2
	DOORS	2 - 3
	WINDOWS	2 - 8
	BOOT LID	2-10
	BONNET	2-12
	FUEL-FILLER CAP	2-13
	SEATS	2-15
	SEAT BELTS	2-20
SUPPLEMENTAL DRIVER AIR BAG RESTRAINT SYSTEM		2-25
	STEERING WHEEL	2-28
	MIRRORS	2-29
	SUNROOF	2-31
	INTERIOR LIGHTS	2-33
	LUGGAGE COMPARTMENT	2-34

# KEYS

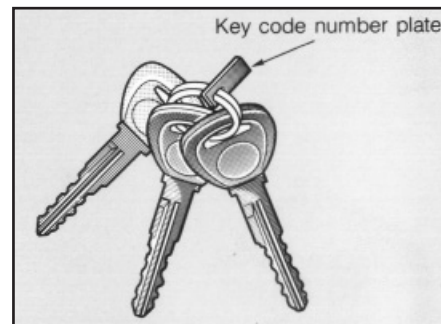
## Keys



Your vehicle has two primary keys and a secondary key.

### Operation of each key

Key	Primary key	Secondary key
Lock Operates		
Ignition switch and steering column lock	Yes	Yes
Door locks	Yes	Yes
Boot lid lock	Yes	No

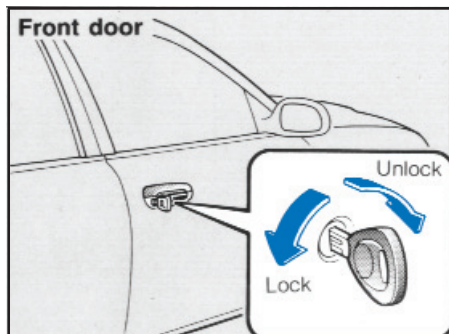


When you must leave the key with a parking attendant:

- Leave the secondary key, which cannot open the boot lock.
- Use the boot security system (page 2-11).

The plate attached to the keys has key code numbers. If you should lose your keys, these numbers will enable an Authorised Xedos Dealer to replace them more easily. Detach the plate and store it in a safe place, not in the vehicle. You should also file a copy of the key code numbers with your important papers.

## Door Locks



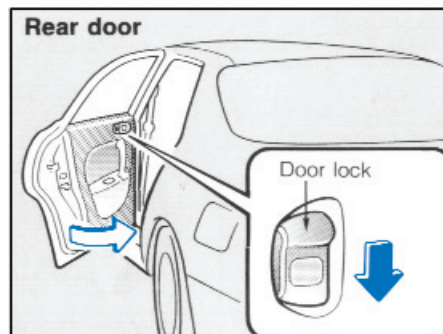
### FROM OUTSIDE

#### Front door

- Either front door can be locked or unlocked with the key.
- Once a door is unlocked, it may be opened by lifting a door handle.

### NOTE

If the driver's door is open and you try to lock it by pushing the lock down, it will automatically pop back up. Be sure to lock the door with the key.

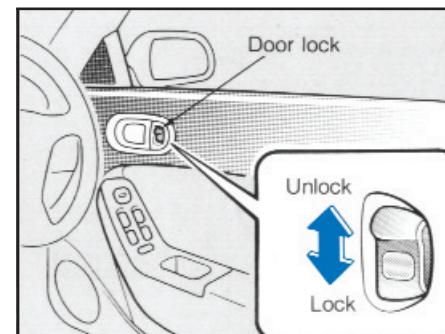


#### Rear door

To lock the rear door, depress the door lock and close the door.

### CAUTION

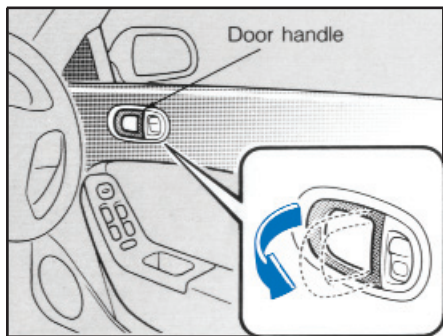
**Always remove the ignition key, close all windows, and lock all doors and the boot when leaving your vehicle unattended.**



### FROM INSIDE

- To lock the doors, depress the door lock.
- To unlock, pull the door lock up.

## DOORS



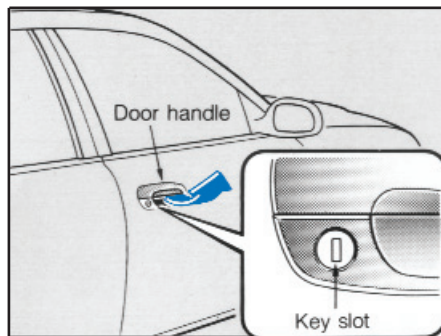
- To open, pull the door handle rearward.

### **WARNING!**

**Never leave children or animals unattended in the vehicle.**

### **NOTE**

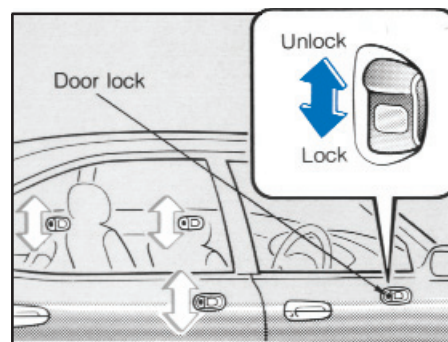
Squirt deicer or glycerine into the locks to keep them from freezing. To open a frozen lock, try heating the key before inserting it.



### **DOOR LOCK ILLUMINATION**

To assist key insertion at night, a light inside the door panel illuminated for a short time after the driver's door or passenger's door handle has been lifted.

## Power Door Locks

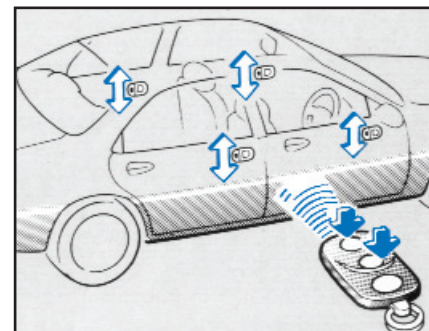
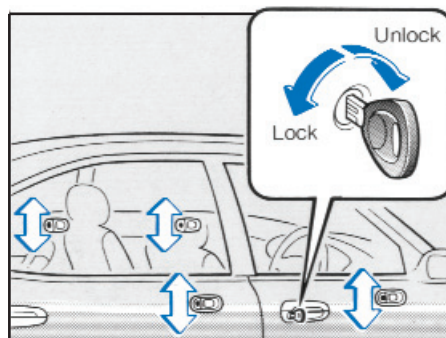


### **With door lock**

All doors can be simultaneously locked or unlocked by depressing or lifting the driver's door lock.

The boot lid can also be unlocked at the same time.

## Keyless Entry System\*

**NOTE**

Power door locks will not work when the driver's door is open.

**With key**

All doors lock or unlock automatically when the driver's or front passenger's door is locked from the outside with key. The boot lid can also be locked or unlocked at the same time.

Operates the locking and unlocking of all doors.

Direct the beam toward the centre of the vehicle.

Push the L switch to lock the doors. To unlock them, push the U switch. After locking the doors (with the remote controller) make sure they are locked.

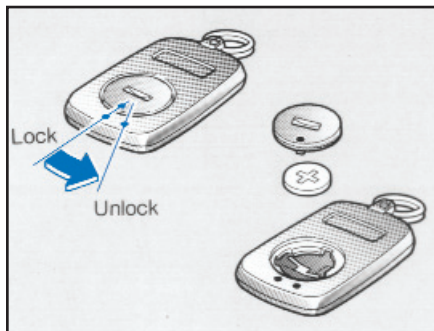
**CAUTION**

To avoid damaging the remote controller, don't drop it, keep it dry and keep it away from heat (such as hot dashboard) above 60° C (140°F).

## DOORS

### NOTE

- The keyless entry system will operate up to about 5 metres from the centre of the vehicle, but this may vary because of local conditions.
- You have 30 seconds to open a door after unlocking it with the remote unlock device. After that, all doors automatically relock.
- This system will not operate when the ignition switch is at ACC(I) or LOCK (0) or when a door is open.
- If the remote controller doesn't work, inspect its battery.



### Battery Replacement

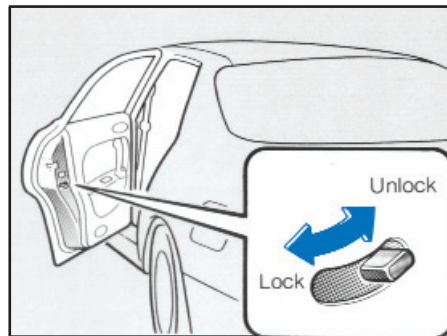
If the keyless entry system won't work at normal range in any location, the battery probably needs changing. Consult your Authorised Xedos Dealer to find the correct replacement battery for your unit.

1. Turn the cap counterclockwise to remove it.
2. Insert the battery with plus side up.
3. Turn the cap clockwise to reinstall it.

### NOTE

If you lose the remote controller, consult your Authorised Xedos Dealer.

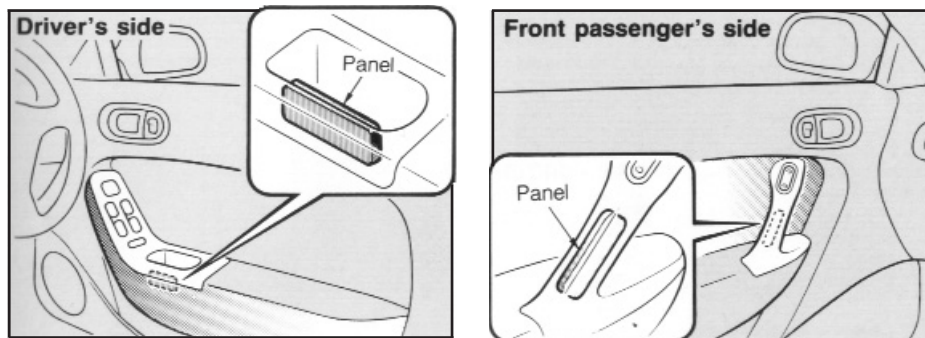
## Rear Door Child Safety Lock



This lock is intended to help prevent children from accidentally opening the rear doors and they should be used whenever they are in the vehicle.

- To lock the rear door so that it cannot be opened from the inside, slide the child safety lock to the lock position before closing the door.
- To open it, lift the door lock and lift the outside door handle.

## Static Electricity Earth



This panel helps to prevent an unpleasant shock from static electricity. Open the door and touch the panel lightly after rising from the seat.

### NOTE

- Only a light touch on the panel is necessary.
- The amount of static shock depends mainly on humidity and clothes.
- The panel will have no effect if you first touch another part of the vehicle body.

## WINDOWS

### Power Windows

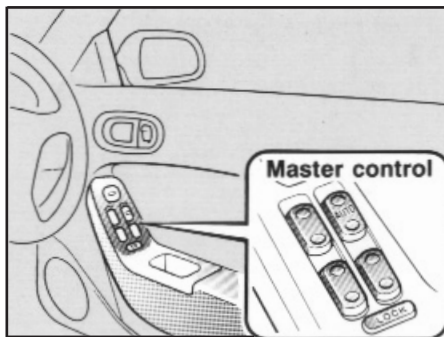
The ignition switch must be in the ON (II) position for the power windows to operate.

#### NOTE

The power window can still be operated for about 5 minutes, after the ignition switch has been turned to LOCK (0) or ACC (I). But it cannot be operated once you open and close a door.

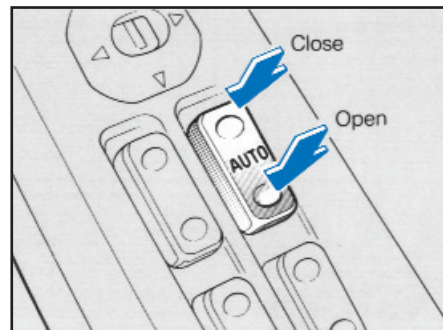
#### WARNING!

*Use caution when closing windows. Make sure all arms, hands, and other obstructions are safely out of the way.*



#### MASTER CONTROL/DRIVER'S SIDE

All windows may be opened or closed by the power window master control on the driver's door. Each door's switch opens and closes its corresponding window.



To open or close a window, depress the power window switch.

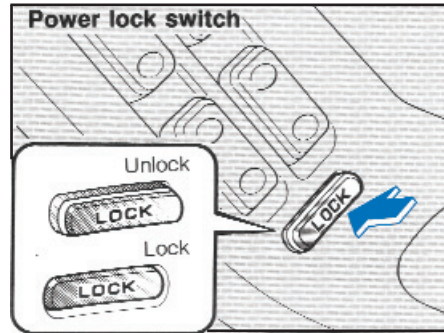
#### CAUTION

**To prevent the fuse from burning out and the power window system from becoming damaged, do not open or close more than two windows at the same time.**



## One-Touch Power Window (driver's window)

When the lower part of the switch is pushed firmly, the window will move to its fully open position.



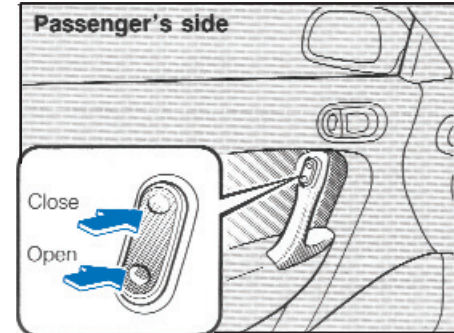
### Power Lock Switch

With the power lock switch in the UNLOCK position, all of the power window switches may be used.

With the power lock switch in the LOCK position, only the driver's window can be operated.

### **WARNING!**

**Keep the power lock switch in the LOCK position except when a power window is being operated at a passenger's door. Injury may result from unintentional window operation.**



### PASSENGER'S SIDE

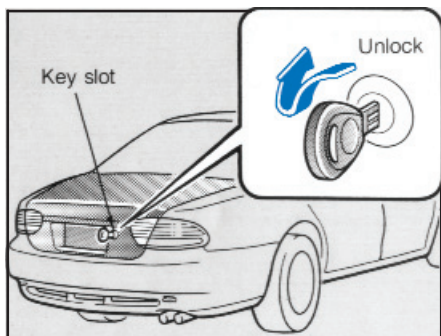
Press the lower part of the switch to open a window.  
Press the upper part to close a window.

### **WARNING!**

**Do not allow children to play with the power windows. They may injure themselves, perhaps seriously.**

## BOOT LID

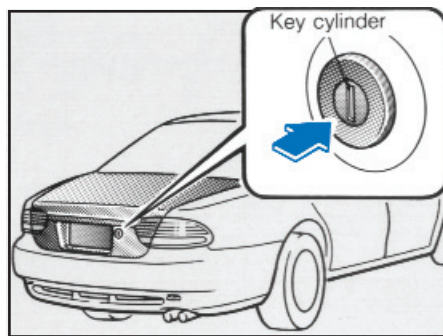
### Boot lid



- To unlock the boot lid insert the primary key into the key slot and turn it counter-clockwise. Then return the key to the centre position and remove it.

#### **NOTE (Power Door Locks)**

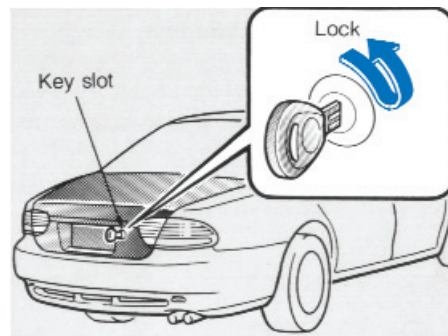
All doors simultaneously unlock when the boot lid is unlocked with the primary key.



- To open the boot lid push the key cylinder.
- To close, use both hands to push the boot lid down until the lock snaps shut. Do not slam it. Pull up the boot lid to make sure it is secure.

#### **WARNING!**

*To avoid drawing dangerous exhaust gases into the vehicle, do not drive with the boot lid open.*



- To lock the boot lid insert the primary key into the key slot and turn it clockwise. Then return the key to the centre position and remove it.

#### **NOTE (Power Door Locks)**

All doors simultaneously lock when the boot lid is locked with the primary key.

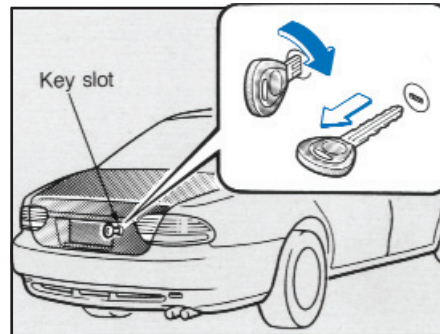
#### **CAUTION**

**Always lock the boot lid and all doors when leaving your vehicle unattended.**

## Boot Security System

The security system is provided to safeguard valuables.

Should it be necessary to leave your vehicle with a parking attendant, etc., you may still protect your valuables by using this system.

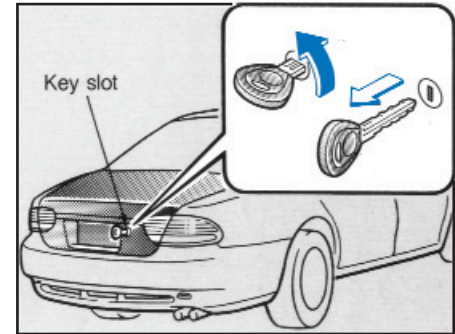


### To use the boot security system:

1. Lock the rear seat backs (page 2-19).
2. Close the boot lid.
3. Insert the primary key into the key slot.
4. Turn it clockwise and remove it.

### NOTE (Power Door Locks)

In this condition, the boot lid cannot be unlocked by the power door locks.

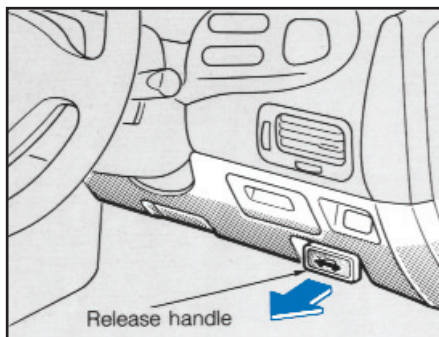


### To cancel the boot security system:

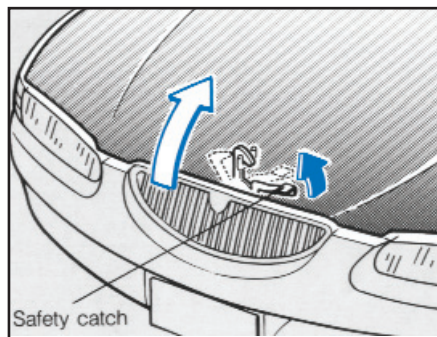
1. Insert the primary key into the key slot.
2. Return it to centrew position and remove it.
3. If necessary, unlock the rear seatbacks.

## BONNET

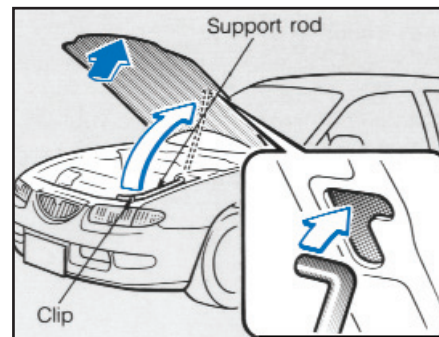
### Bonnet Release



1. Pull the release handle to unlatch the bonnet.



2. Pull the safety catch up and lift the bonnet.



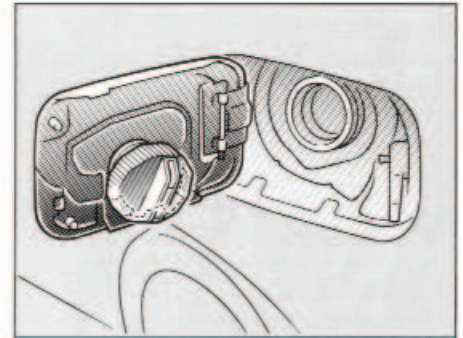
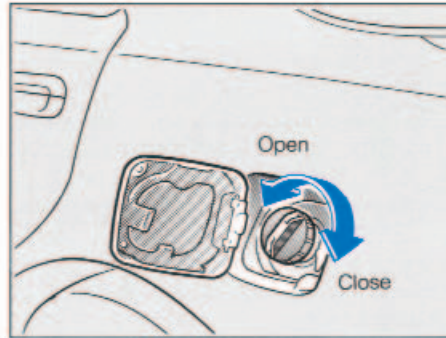
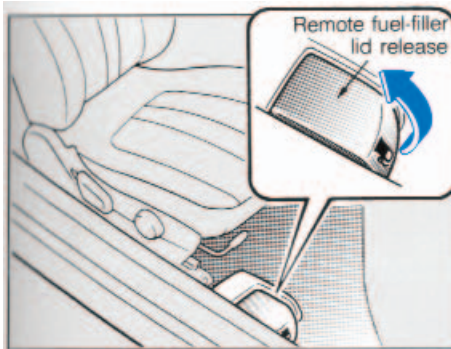
3. Hold the bonnet open with the support rod.

Before closing the bonnet, secure the support rod in its clip to prevent it from rattling.

#### To close the bonnet:

- Check the underbonnet area to make certain that all filler caps are in place and that all loose items have been removed
- Close the bonnet firmly so that it latches securely. Do not slam it shut.

### Fuel-Filler Cap Release



To open the fuel filler lid, pull up on the remote fuel-filler lid release.

- To remove the cap, first turn it counter-clockwise.
- To install the cap, turn it clockwise until it clicks. This signals that the cap is securely tightened.

The removed cap can be placed on the inside of the fuel-filler lid when refuelling.

## FUEL-FILLER CAP

---

### **WARNING!**

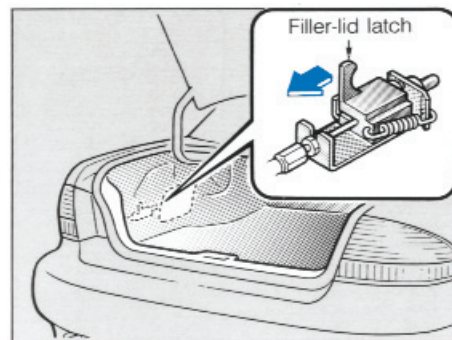
- **Fuel may be under pressure. Always remove the fuel cap carefully and slowly. If the cap is venting fuel or if a hissing sound is heard, wait until the condition stops before removing the cap. If these precautions are not followed, fuel may spray out and cause personal injury.**
- **Fuel vapor can be extremely hazardous. When refuelling, always stop the engine and never allow sparks or open flames near the filler neck.**

### **NOTE**

- If the fuel tank cap requires replacement, use only a Genuine Xedos cap or the equivalent specified for your vehicle. An incorrect fuel cap can result in a serious malfunction of the fuel system or emission control system. Correct replacement caps are available at Authorised Xedos Dealers.
- If the fuel filler lid will not open in cold weather because the area around it is frozen, push or tap lightly on the lid.

### **CAUTION**

**Do not spill fuel on the exterior surfaces of the vehicle. Any type of fuel on painted surfaces may dull or soften paint.**



### **Manual override**

If the fuel filler lid does not open with the remote fuel-filler release, use the override release.

The override release is behind the panel inside the boot on the left side. Remove the boot side trim, reach into the opening and pull the filler-lid latch toward the back of the vehicle.

### Front Seat

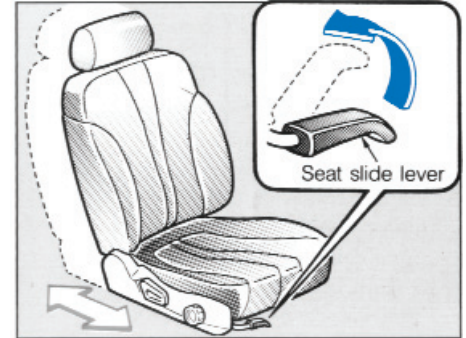
#### **WARNING!**

- *Do not adjust the driver's seat while the vehicle is in motion. Doing so could cause loss of control, accident, and personal injury.*
- *Rear-seat passengers should not lean on the back of the front seat while the vehicle is in motion. A seat back that is folded forward even slightly may not lock properly during a sudden stop or a collision.*
- *Do not allow packages or other objects to interfere with the normal position of a seat back. This may prevent it from locking in the event of a sudden stop or collision.*

#### **WARNING!**

*To avoid possible injury by sharp objects, it is advisable to wear protective gloves when attempting to open the fuel-filler lid manually.*

### Front Seat Adjustment



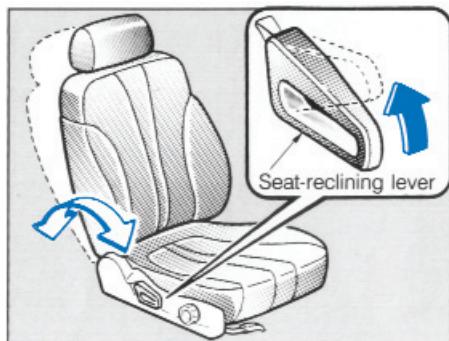
#### **SEAT SLIDE**

To move the seat forward or backward, move the lever upward, slide the seat to the desired position, and release the lever.

#### **CAUTION**

Place nothing under a front seat. Loose objects might interfere with the seat-slide mechanism.

## SEATS

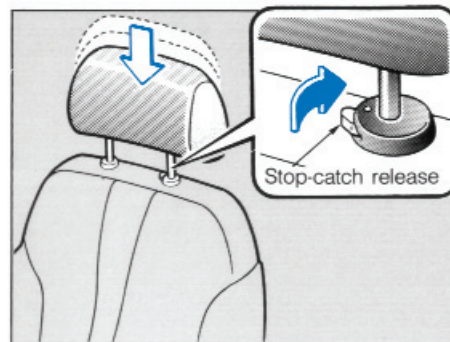


### SEAT RECLINER

To change the seat-back angle, lean forward slightly and raise the lever. Then lean back to the desired angle and release the lever. After adjustment, make sure the lever is returned to its original position; otherwise, the seat back could unlatch while the vehicle is in motion, causing the driver to lose control of the vehicle.

### **WARNING!**

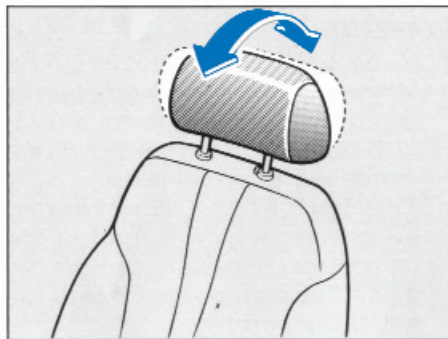
*To reduce the risk of sliding under the lap belt and thereby suffering personal injury in the event of a collision, do not recline the seat back more than necessary for comfort. The seat belts are designed to provide optimum protection when the front passenger and driver are sitting well back and upright in their seats. During a collision, especially a front-end collision, the risk of personal injury may increase with the increasing recline angle of the seat back because the front passenger and driver may slide under the lap belt and have restraint forces applied directly to their abdominal areas. Therefore, try to keep the seat back in a fairly upright position whenever possible.*



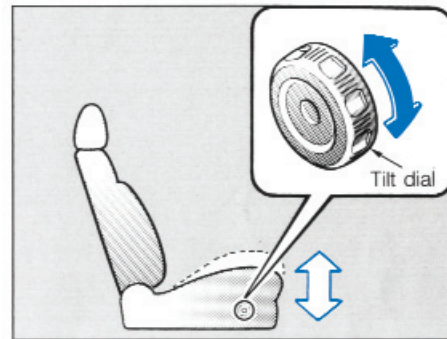
### HEADREST

- To raise the headrest, pull it up.
- To lower the headrest, press the stop-catch release and press the headrest down.



**Headrest angle (Driver's Seat)\***

To adjust headrest angle, apply pressure to the top of the headrest.

**CUSHION TILT (Driver's Seat)**

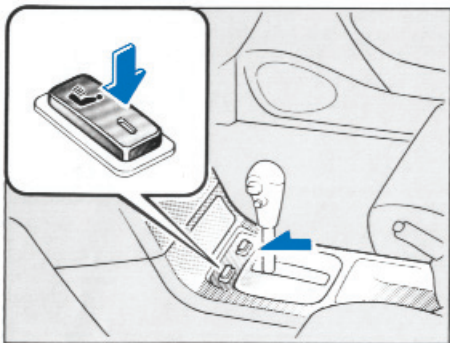
The seat cushion angle can be adjusted by rotating the dial.

**WARNING!**

- **To reduce the risk of head and neck injuries, do not operate the vehicle with the headrest removed.**
- **Adjust the top of the headrest so that it is closest to the top of your ears (and never behind your neck) to reduce the chance of injury in the event of a collision.**

## SEATS

### Seat Warmer\*



The front seats are electrically heated by turning on the respective switch with the ignition switch ON (II). The thermostat regulates the seat temperature by turning the current on and off.

### Rear Seat

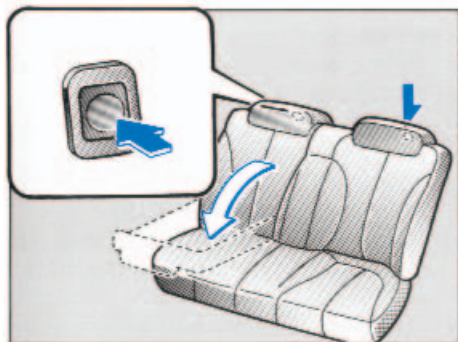
#### **WARNING!**

- *If the rear seat back is not securely latched, passengers and objects could be thrown forward and injury could occur in the event of a sudden stop or collision.*
- *To avoid the possibility of burns, do not remove the carpet in the cargo area. Emission controls beneath this area generate high exhaust temperatures.*
- *Luggage and other cargo should not be piled higher than the seat backs because they may become projectiles during a sudden stop or collision.*
- *To help prevent injury in the event of sudden acceleration, a quick stop, or a collision, passengers should not ride in the cargo area or sit or recline on folded seat backs while the vehicle is in motion.*
- *Do not allow children around folded seat backs to avoid their being trapped inside the boot.*

#### **CAUTION**

When resetting the seat back to the upright position, make sure it is securely latched by pushing it forward and rearward.

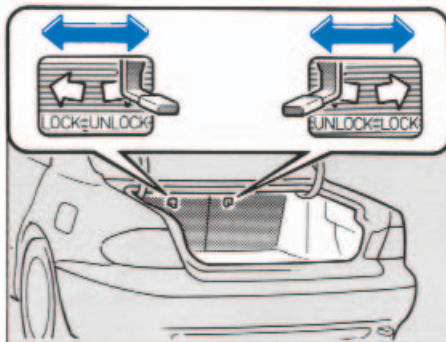
## Rear Seat Adjustment



### SPLIT-FOLDING SEAT

The rear-seat backs fold forward to increase the size of the boot.

- Push the button to unlock the seat back, then fold it forward and down.
- To raise the seat back, lift it and push it firmly into place.



The split-folding seat is lockable from inside the boot.

If you must leave the vehicle with someone, you may protect valuables by locking the rear seat back and boot lid. Surrender only the secondary key. This key will operate only the door locks and ignition switch.

To lock or unlock the seat backs, move the lever in the direction of the arrow.

## SEAT BELTS

---

### Seat Belt Restraint System

To help decrease the possibility or severity of injury during accidents and sudden stops, we recommend that the driver and passengers be properly restrained at all times by using the seat belts provided. The lap-shoulder belts have retractors with inertia locks.

The retractors keep the belts out of the way while passengers enter or exit the vehicle. Inertia locks allow the belts to remain slack on the passengers for comfort until a deceleration force occurs (such as a sudden stop or collision). At that time the belts will automatically lock in position, and you and your passengers will be restrained.

#### **WARNING!**

- ***Lap/shoulder-belt assemblies maybe damaged when subjected to stress. Replace all belts, retractors, and hardware in use during any collision except a minor one. Replace all restraint systems and properly repair all anchorages in areas damaged by a collision.***
- ***Passengers should not be allowed to ride in the cargo area of a vehicle. Persons not riding in a seat with a fastened seat belt are much more likely to suffer serious bodily injury during a collision.***

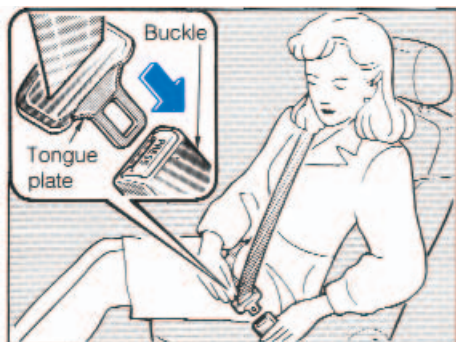
#### **WARNING!**

- ***Never wear the shoulder belt under the arm***
- ***Never swing it around your neck and over the inside shoulder.***
- ***Never use a single belt for more than one person at a time.***
- ***Be sure the lap portion of the belt is fitted snugly around the hips, not the waist.***
- ***Use the shoulder belt on the outside shoulder only.***

***Failure to follow these precautions could increase the chance and severity of injury.***

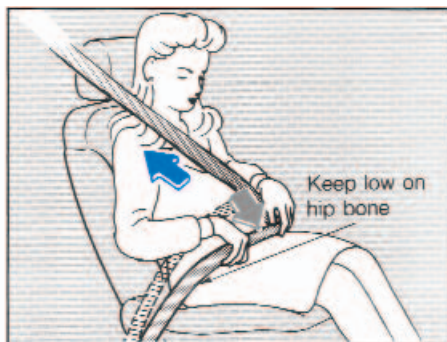
#### **NOTE**

If the belt locks when being pulled out, rewind it completely into the retractor then pull it out to the desired length.

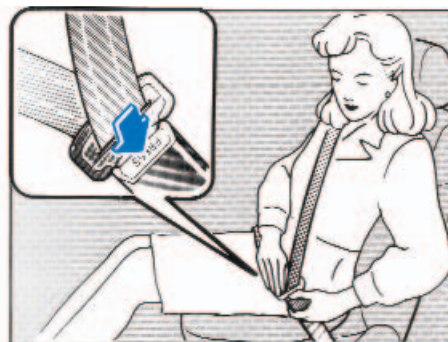


### To fasten seat belt

1. Grasp the buckle and tongue plate.
2. Slowly pull out the lap/shoulder belt.
3. Insert the tongue plate into the open end of the buckle until a click is heard, indicating the belt is locked.



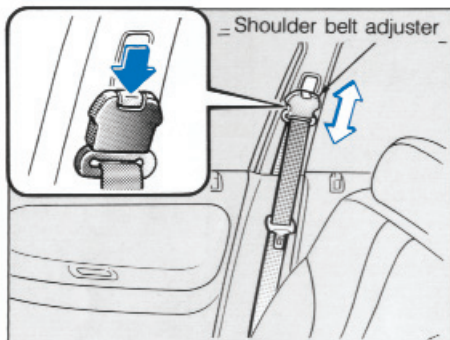
Position the lap belt across your lap as **LOW ON THE HIPS** as possible to reduce the risk of sliding under it during an accident. Adjust the belt to a **SNUG FIT** by pulling it. The belt retractor is designed to take up excess webbing automatically and to maintain tension on the belt.



### To unfasten seat belt

Depress the button on the buckle.

## SEAT BELTS

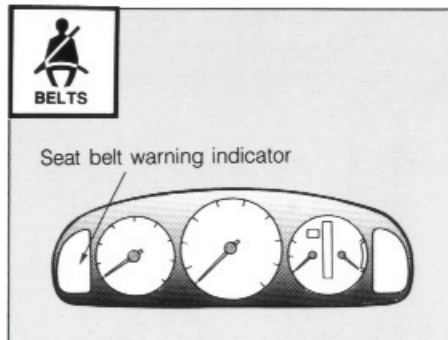


### Shoulder belt adjuster

This adjusts the shoulder belt angle to five positions for a more comfortable fit. To adjust, simply push the button and move to the desired position, and then release the button.

### CAUTION

**Make sure that the belt is positioned across your shoulder near your neck, not on your neck or upper arm. Failure to do so could reduce the amount of protection in an accident and increase the chance of injury.**



### SEAT-BELT WARNING LIGHT/BEEP

When you turn the ignition switch ON (II) without first having fastened driver's seat, a warning light will come on and a beep will sound. (For more detailed information, refer to Warnings and indicators on page 4-17.)

### Rear Seat Belts

Two kinds of belts are equipped.

- Lap/shoulder belts, for people who sit next to the side windows.
- Lap belt, for people who sit in the centre of the rear seat.

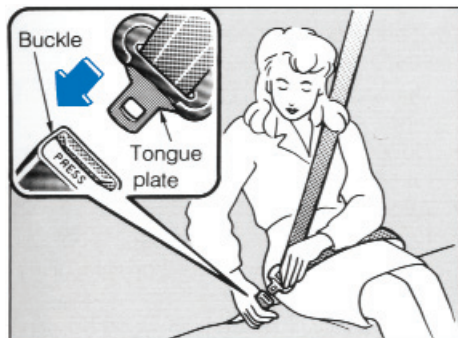
### WARNING!

- **Never wear the shoulder belt under the arm**
- **Never swing it around your neck and over the inside shoulder.**
- **Never use a single belt for more than one person at a time.**
- **Be sure the lap portion of the belt is fitted snugly around the hips, not the waist.**
- **Use the shoulder belt on the outside shoulder only.**

**Failure to follow these precautions could increase the chance and severity of injury.**

### NOTE

If the belt locks when being pulled out, rewind it completely into the retractor then pull it out to the desired length.



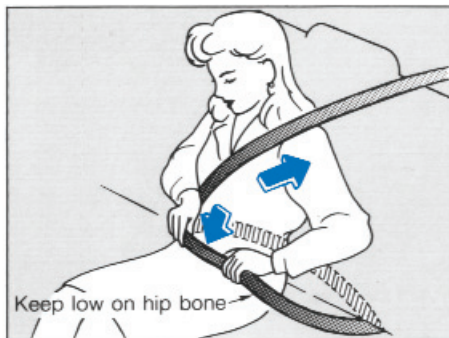
### Lap/shoulder belt

#### To fasten:

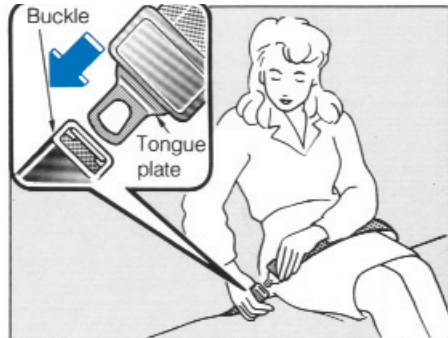
1. Grasp the buckle and tongue plate.
2. Slowly pull out the lap/shoulder belt.
3. Insert the tongue plate into the open end of the buckle until a click is heard, indicating the belt is locked.

#### To unfasten:

Depress the button on the buckle.



Position the lap belt across your lap as **LOW ON THE HIPS** as possible to reduce the risk of sliding under it during an accident. Adjust the belt to a **SNUG FIT** by pulling it. The belt retractor is designed to take up excess webbing automatically and to maintain tension on the belt.

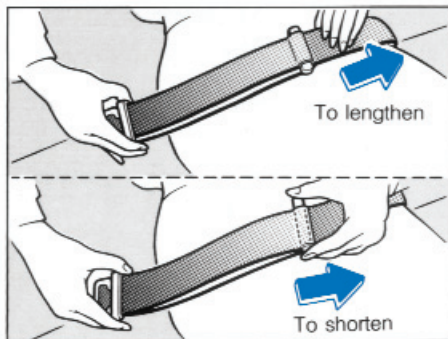


### Lap Belt

#### To fasten:

1. Grasp the buckle end.
2. Insert the tongue plate into the open end of the buckle until a click is heard, indicating the belt is locked. Make sure the belt is not twisted.

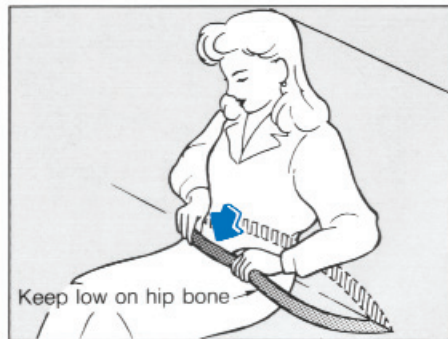
## SEAT BELTS



3. If necessary, lengthen or shorten the belt. To adjust, hold the tongue at right angles to the webbing and pull to lengthen, or pull the loose end of the belt webbing to shorten.

### To unfasten:

Depress the button on the buckle.



Position the lap belt across your lap as **LOW ON THE HIPS** as possible.

### **WARNING!**

***Be sure the lap belt is fitted snugly around the hips, not on the waist. Failure to do so may increase the chance of injury in the event of a collision.***

## Proper Use and Care of the Seat-Belt System

To gain maximum effectiveness from the seat-belt system, follow these suggestions:

- Use the belts at all times—even on short trips.
- Never use the same belt for more than one person at a time.
- Keep sharp edges and damaging objects away from the belts and other parts of the restraint system.
- Periodically inspect belt webbing, anchors, buckles and all other parts for signs of wear, damage, and weakness. Replace questionable parts immediately.
- To clean the belt webbing, use any mild soap solution recommended for cleaning upholstery and carpets; follow the instructions provided with the soap. Do not bleach or redye the webbing because this may weaken it.
- No modifications or additions should be made by the user.
- After wearing a seat belt, make sure it is not caught on the adjusting levers or elsewhere.



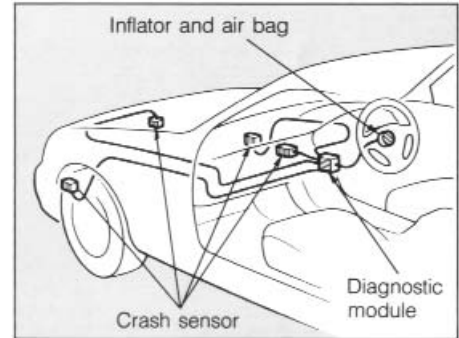
## SEAT BELTS, SUPPLEMENTAL DRIVER AIR BAG RESTRAINT SYSTEM

### Supplemental Driver Air Bag Restraint System\*

#### **WARNING!**

**All seat-belt assemblies, including retractors and attaching harness, should be inspected after any collision. We recommend that all seat-belt assemblies in use during a collision be replaced unless the collision was minor and the seat belts show no damage and continue to operate properly. Seat-belt assemblies not in use during a collision should also be inspected and replaced if damage or improper operation is noted.**

The Supplemental Driver Air Bag Restraint System is designed to provide protection for the driver in a frontal accident **in addition to** that provided to the driver by the three-point seat belt system. However, the Supplemental Air Bag Restraint System is not designed to deploy in any accident except a moderate to severe frontal collision, and is not designed to assist the driver in a side impact, rear impact, or roll-over accident. Seat belts, which are designed to help decrease the possibility or severity of injury in accidents or sudden stops, must be used to obtain the best occupant protection of which the vehicle is capable. **We recommend the use of seat belts by all vehicle occupants to reduce the risk of injury in an accident.** Use of a seat belt by the driver is particularly important to keep the driver in the proper position for maximum air bag protection.



#### **SYSTEM DESCRIPTION**

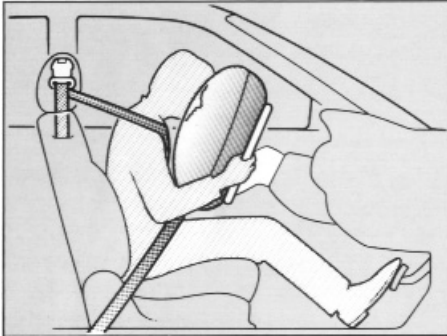
The Supplemental Driver Air Bag Restraint System consists of two basic sub-systems: the driver air bag system, with the inflator and air bag; and the electrical system, including crash sensors and diagnostic module. The air bag is mounted in the centre of the steering wheel, but is designed to stay out of sight until activated by a moderate to severe frontal collision.

#### **WARNING!**

**To avoid any accidental activation of the system or rendering the system inoperative, which may result in**

## SUPPLEMENTAL DRIVER AIR BAG RESTRAINT SYSTEM

---



*serious injury, no modifications should be made to any components or wiring of the Supplemental Driver Air Bag Restraint System as illustrated. This includes the installation of additional trim material, or badges or similar items over the steering wheel hub and installation of additional electrical/electronic equipment on or near Supplemental Driver Air Bag Restraint System components and/or wiring.*

The Supplemental Driver Air Bag Restraint System is designed to rapidly inflate after receiving a signal from the crash sensors. Upon inflation, the rubber coated nylon bag helps prevent the driver's face and chest from striking the steering wheel or windshield, supplementing the restraint provided by the seat belt. The bag then rapidly deflates.

### NOTE

During a severe frontal impact, a sudden, fairly loud inflation noise will be heard and a small quantity of smoke will be released, neither of which is injurious. The smoke does not indicate a fire in the vehicle.

The air bag is designed to function on a one-time-only basis. In the event that the air bag is deployed, **the air bag module will not function again and must be replaced.** Only Authorised Xedos Dealers should repair or replace the system. Please contact an Authorised Xedos Dealer.

### WARNING!

*If the vehicle has been in a collision that was not great enough to activate the Supplemental Driver Air Bag Restraint System, a careful inspection should be made to check for deformation of the parts on which the sensors are mounted, and repairs must be made if necessary. See you Authorised Xedos Dealer; otherwise the Supplemental Driver Airbag Restraint System may not function properly in the event of an accident.*

## SUPPLEMENTAL DRIVER AIR BAG RESTRAINT SYSTEM

### DRIVER INFORMATION FEATURES

A diagnostic module continually monitors the readiness of the Supplemental Driver Airbag Restraint System. Monitoring begins when the ignition switch is turned to ON (II) and continues when the vehicle is being driven. The following components are monitored by the supplemental driver air bag restraint system warning light or beep.

- Crash sensors
- Backup battery
- Air bag module
- Diagnostic module
- Related wiring
- Warning light



### Supplemental Driver Air Bag Restraint System warning light

If the Supplemental Driver Air Bag Restraint System is operating properly, the warning light comes ON when turning the ignition switch ON (II) or after cranking the engine, then goes out after approximately 6 seconds. A system malfunction is indicated by the flashing or continuous illumination of the warning light or failure of the light to turn on. If the warning light fails to light, or stays on continuously or flashes, the Supplemental Driver Air Bag Restraint System is in need of service and should be taken to your nearest Authorised Xedos Dealer as soon

as possible. Unless serviced, the Supplemental Driver Air Bag Restraint System may not function properly in the event of an accident.

### Supplemental Driver Air Bag Restraint System warning beep

The Supplemental Driver Air Bag Restraint System warning light is the prime means of determining the air bag system condition. However, a series of beeps will be heard if the warning light is out **and** malfunction occurs in the system. This also means that the Supplemental Driver Air Bag Restraint System is in need of service. See your Authorised Xedos Dealer as soon as possible. The beeps will repeat each time the ignition is turned to ON(II) until the cause of the light outage is rectified. Unless serviced, the Supplemental Driver Air Bag Restraint System may not function properly in the event of an accident.

## SUPPLEMENTAL DRIVER AIR BAG RESTRAINT SYSTEM, STEERING WHEEL

### **WARNING!**

- **Do not attempt any self-servicing of the Supplemental Driver Air Bag Restraint System; tampering could cause activation of the system and the risk of personal injury. For servicing of the Supplemental Air Bag System, see your Authorised Xedos Dealer.**
- **Please refer to safety instructions available at an Authorised Xedos Dealer when the air bag module is disposed or your vehicle is scrapped. Failure to follow these instructions could increase the risk of personal injury.**

### **MAINTENANCE**

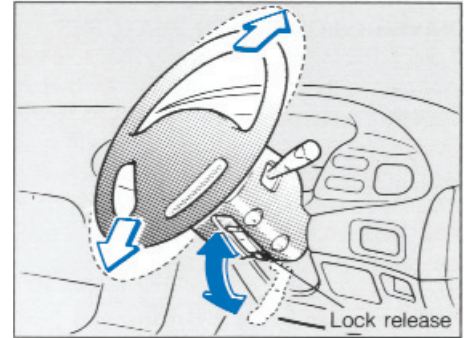
The Supplemental Driver Air Bag Restraint System is maintenance free. But in the event of a malfunction indicated by any of the following, the vehicle should be taken promptly to your nearest Authorised Xedos Dealer to have the system checked. Unless checked and repaired, the Supplemental Driver Air Bag Restraint System will not function reliably:

- Flashing of the warning light.
- Continuous illumination of the warning light.
- Failure of the warning light to illuminate, when the ignition switch is turned to ON(II) and warning beeps sound.
- The air bag has been inflated.

### **NOTE**

When you sell the vehicle we urge you to give notice to the subsequent owner that it is equipped with a Supplemental Driver Air Bag Restraint System by alerting him to the applicable section in the Owner's Manual.

### **Tilt Steering**

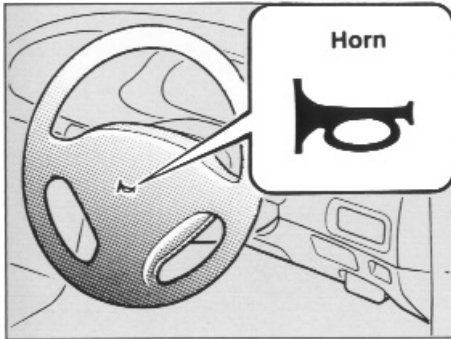


To change the steering wheel angle, pull down the lock release, adjust the steering wheel to the desired angle then push up the lock-release lever to lock the steering column.

### **WARNING!**

**Never adjust the tilt position of the steering wheel while the vehicle is in motion.**

**After adjusting, push up and down against the steering wheel to be certain it is locked in position.**



Push the pad to sound the horn. Check the horn regularly for proper operation.

Be sure to adjust any mirror angles before driving.

### **WARNING!**

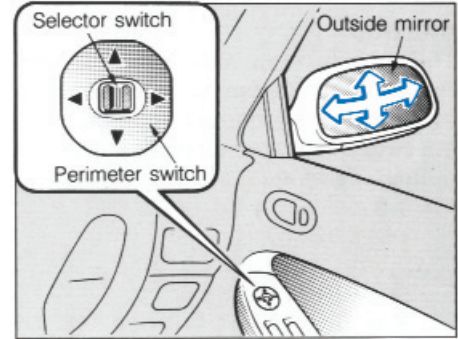
*If the outside mirrors are convex, objects seen in the mirror are closer than they appear.*

*The mirror should be used carefully to estimate distances of following vehicles when changing lanes.*

*Use your inside mirror to determine the size and distance of objects seen in the convex mirror.*

### **CAUTION**

**Do not scrape ice off the mirror face; this may damage the surface of the glass. If ice should restrict movement of the mirror, do not force the mirror to adjust it. To remove ice, use a deicer (spray or blower for example), sponge, or soft cloth.**



This switch controls the adjustments for both right and left outside mirrors. To adjust the position of either mirror:

1. Move the selector switch to the right or left to activate the adjusting mechanism for the corresponding mirror.
2. Adjust the mirror angle by depressing the appropriate perimeter switch.

### **NOTE**

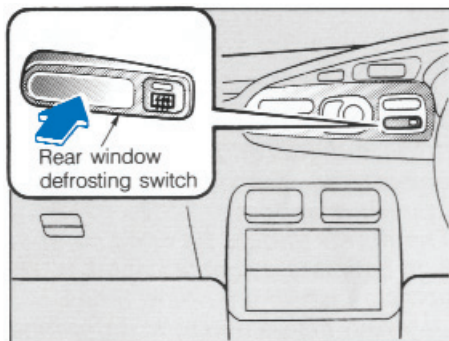
Return the selector switch to the OFF (centre) position when not in use.

## MIRRORS

### CAUTION

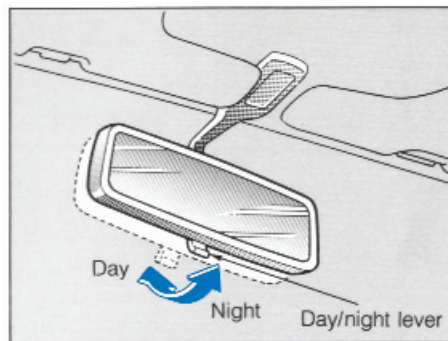
The mirrors stop moving when they reach the maximum adjusting angles, but the motor continues rotating while the switch is on. Do not leave the switch on unnecessarily.

### Mirror Defroster\*



The rear window defroster switch also controls the mirror defrosters. (Refer to page 4-25.)

### Day/Night Mirror



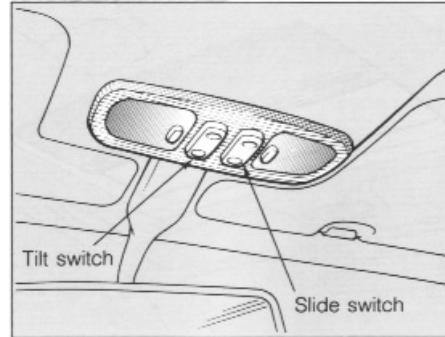
Adjust the mirror to centre on the view through the rear window. Make this adjustment while the day/night lever is in the day position.

Pull the day/night lever toward you to reduce glare from the headlights of vehicle behind you during night driving.

### NOTE

Remember that you lose some rearview clarity in the night position.

### Sunroof\*



#### **WARNING!**

**Do not put large objects on the flat area behind the rear seat or pile luggage or other cargo higher than the seat backs because they may obscure vision and could become dangerous projectiles during a sudden stop or collision.**

The sunroof may be opened or closed electrically. Power operation works only with the ignition switch in the ON(II) position.

- To open, press the rear end of the slide switch on the right of the overhead console. The sunroof can be opened to any position desired by pressing and releasing this switch.
- To close, press the opposite end of the switch.

The sunroof may also be tilted open. The rear of the sunroof will raise to provide additional ventilation.

- To open the sunroof to the tilted position, Push the rear end of the tilt switch.

- To close, push the opposite end.

#### **WARNING!**

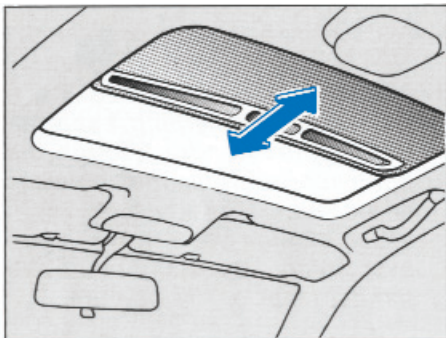
- **Do not extend anything, especially head and hands, through the open sunroof while the vehicle is in motion.**
- **When closing the sunroof, keep everything, especially head and hands, clear of the opening.**

#### **NOTE**

- Make sure the sunroof is fully closed when leaving the vehicle unattended.
- Periodically remove any dirt that may have accumulated on the guide rail.

## SUNROOF

---



### SUNSHADE

The sunshade can be opened by hand while the glass sunroof remains closed.

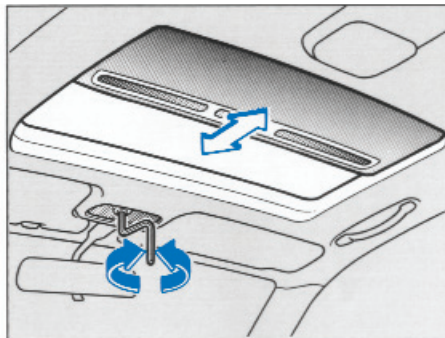
When the glass sunroof is opened, the sunshade also opens.

The sunshade cannot be closed while the sunroof remains open.

Close the sunroof; the sunshade may then be closed by hand.

### CAUTION

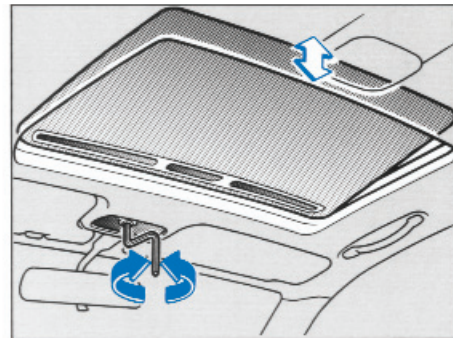
**The sunshade does not tilt. Do not push on the sunshade. It may cause damage.**



### MANUAL OVERRIDE

If the sunroof will not operate by the switches, it can be opened or closed manually with the emergency handle (allen wrench) furnished in the glove box.

Turn it counterclockwise to open and clockwise to close.

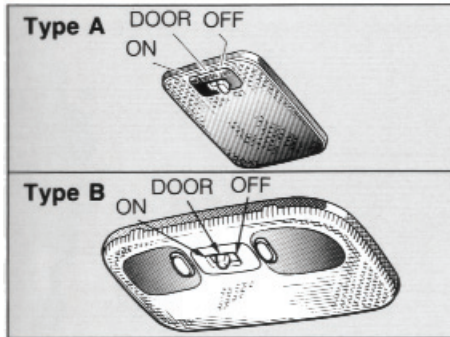


When tilted, turn it counterclockwise to close and clockwise to open.

Have the system checked by an Authorized Xedos Dealer as soon as possible.



## Interior Light



- OFF -Lights off.  
 DOOR -Lights on when a door is open.  
 ON -Lights on.

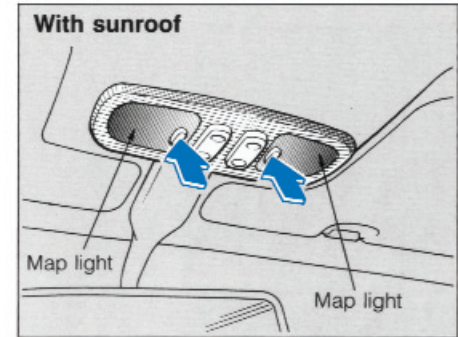
### NOTE

When the switch is in the door position, the interior light:

- Comes on for about 15 seconds when the driver's door is unlocked, or when the key is used to unlock the passenger's door.
- Comes on for about 30 seconds after the ignition key is removed.

The light goes out if the ignition key is turned to ON(II), or the driver's door is locked.

## Map Light\*

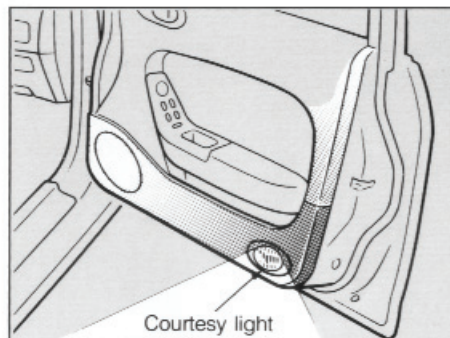
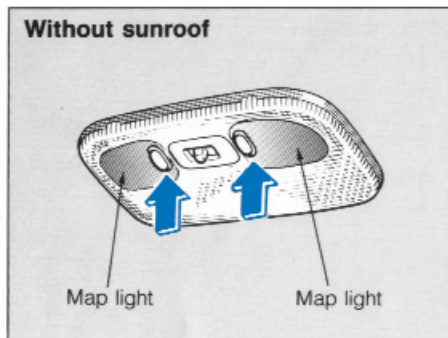


The map lights are switched on or off individually by pushing the buttons.

## INTERIOR LIGHTS, LUGGAGE COMPARTMENT

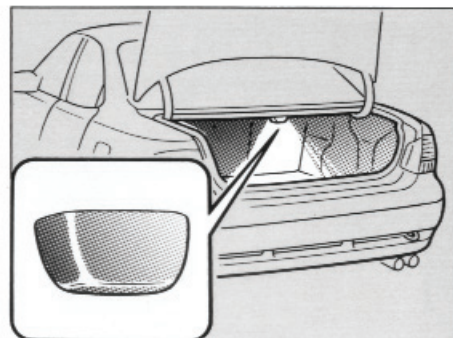
---

### Courtesy Lights



When a door is opened, the courtesy lights come on automatically. Closing the door turns them off automatically.

### Boot Light



When the boot lid is opened, the boot light will be turned on automatically. Closing the boot lid will automatically turn the light off.

